

ITEM NO.	PART NO.	QTY.	DESCRIPTION	PACKED BY
1	TSA1149	1	SEAT SWIVEL ASSEMBLY	
2	-	4	ORIGINAL SEAT FLOOR BOLT (NOT SUPPLIED)	
3	-	5	ORIGINAL SEAT UNDERSIDE NUT (NOT SUPPLIED)	
4	TS-LB07	1	SWIVEL WARNING STICKER	

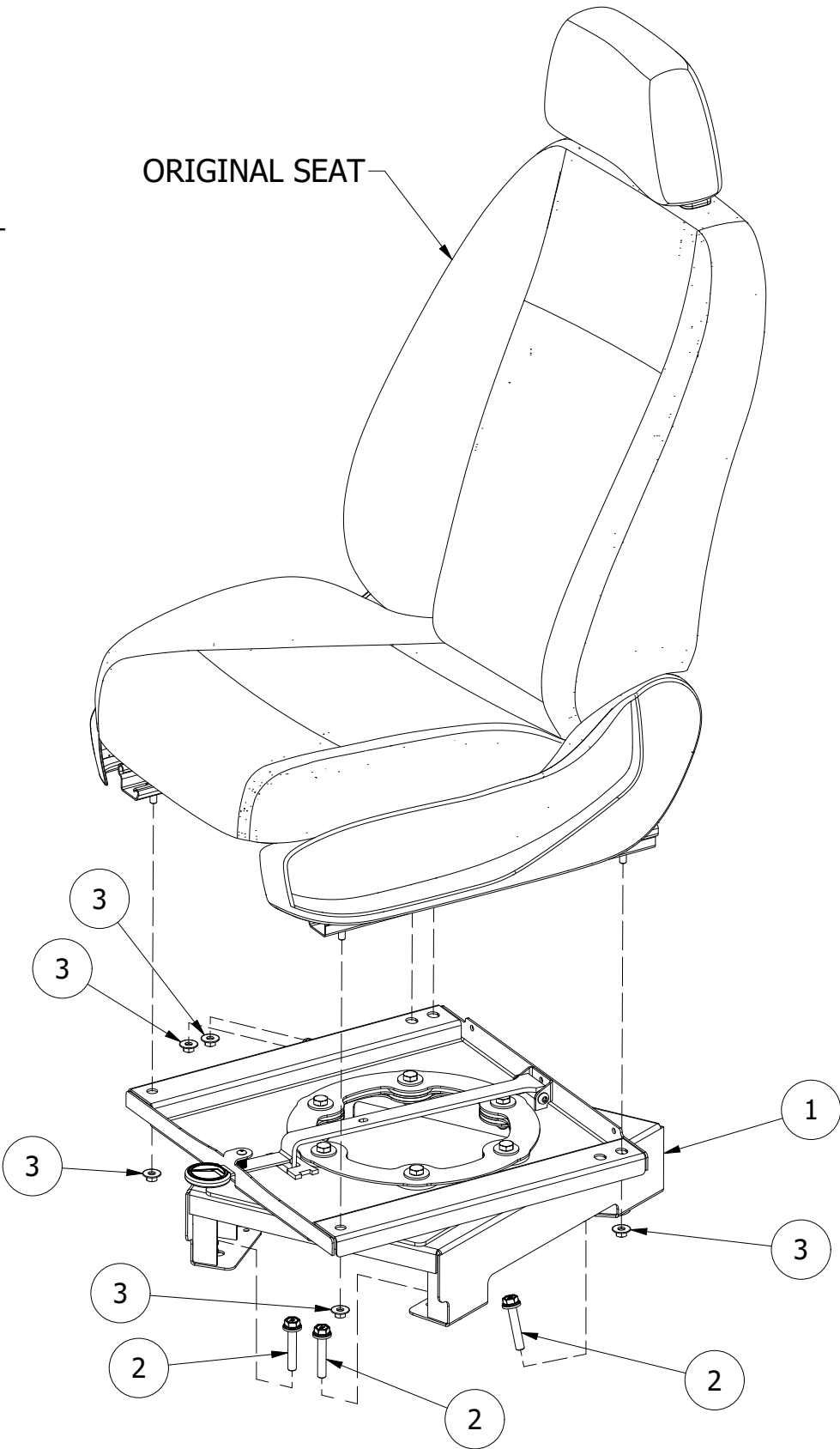
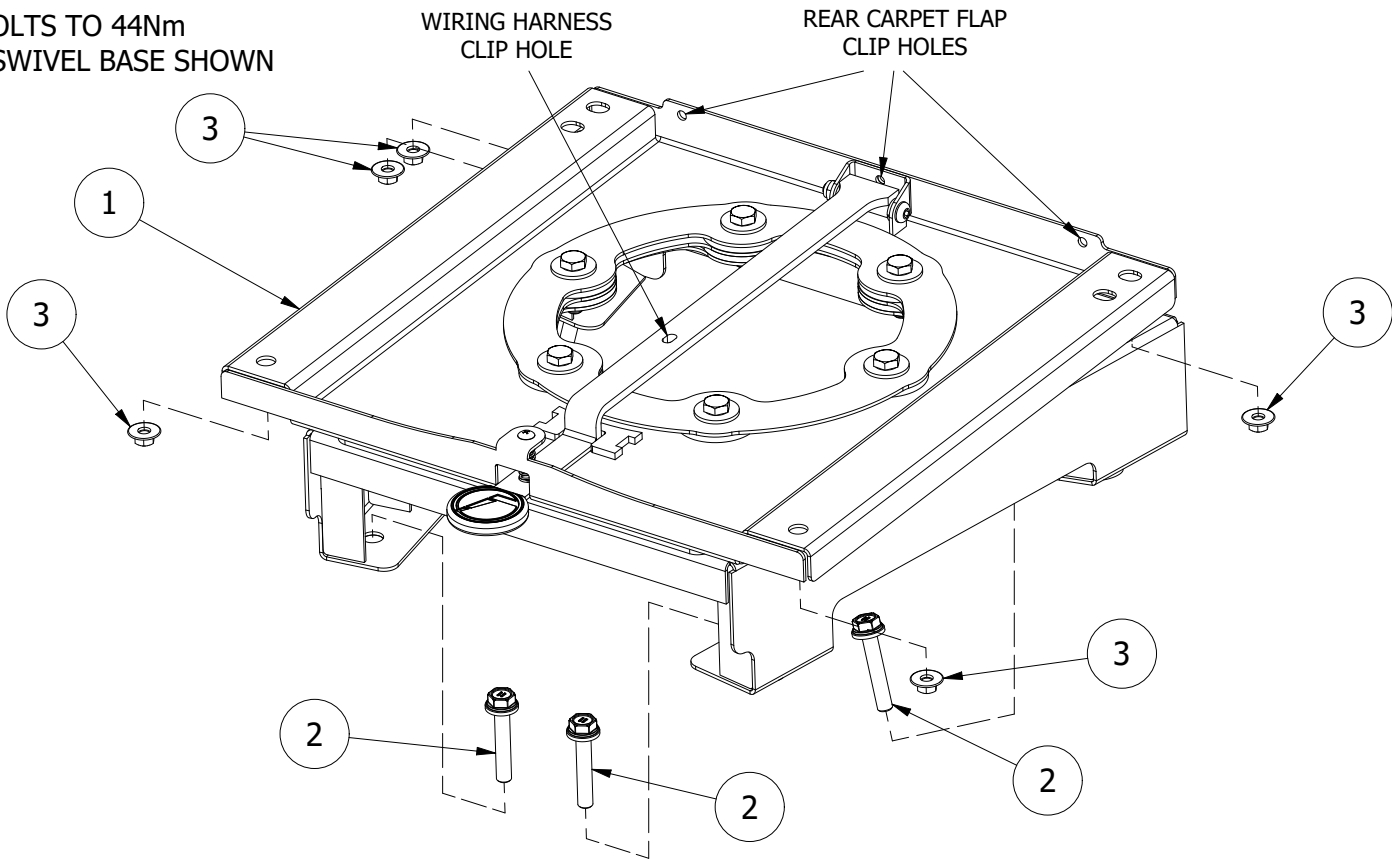


PRODUCT
WEB LINK

ASSEMBLY INSTRUCTIONS

1. REMOVE ORIGINAL SEAT. THIS INCLUDES UNCLIPPING THE REAR CARPET FLAP AND ANY UNDERSIDE WIRING HARNESSES FROM THE SEAT
2. REMOVE SEAT BASE FRAME FROM SEAT
3. PLACE SWIVEL INTO VEHICLE, IN POSITION OF THE ORIGINAL SEAT BASE FRAME
4. FIT THE 4 x M10 ORIGINAL SEAT FLOOR BOLTS (NOTE: THE REAR 2 BOLTS CAN BE ACCESSED THROUGH OPENING IN TOP OF SWIVEL)
5. FIT THE SEAT ONTO THE SEAT SWIVEL BASE, ENSURING THE 5 OEM SEAT UNDERSIDE STUDS ARE CORRECTLY ALIGNED WITH HOLES IN THE SWIVEL TOP PLATE. TURNING THE SWIVEL TO APPROX. 30° WILL ASSIST WITH ACCESSING THE SEAT UNDERSIDE STUDS
6. FIT THE 5 x ORIGINAL SEAT UNDERSIDE NUTS REMOVED IN STEP 2
7. RE-CONNECT ANY WIRING CONNECTORS UNDER THE SEAT AND CLIP HARNESS INTO THE SLOT ON THE TOP OF THE SWIVEL LEVER
8. REFIT THE ORIGINAL SEAT REAR CARPET FLAP, USING THE 3 OEM PLASTIC CLIPS, INTO THE REAR OF THE SWIVEL TOP PLATE
9. TEST SWIVEL OPERATION (REFER IMPORTANT NOTE BELOW)

NOTE: TORQUE M10 BOLTS TO 44Nm
DRIVER'S SIDE SWIVEL BASE SHOWN



The installer must label the seat with this Warning: **THIS SEAT IS ONLY TO BE USED IN THE FORWARD FACING POSITION WHEN THE VEHICLE IS IN MOTION**

The OEM centre console must be removed to allow the seat swivel to turn without any interference.

If fitting a swivel to the driver side seat, the handbrake must be relocated/converted to a floor type, or push button parking brake.

This swivel cannot be fitted if OEM seats are non-factory type.

Important: Swivel must be tested before job is complete. if the swivel is tight or hard to turn, **scan QR code to the right to see a troubleshooting guide.**

IMPORTANT INFORMATION FOR INSTALLERS		PROPRIETARY AND CONFIDENTIAL		PRODUCT SEAT SWIVEL		
<p>Aftermarket seats and swivels sold by Techsafe Seating have been tested by an approved testing authority in Australia and found to meet the strength and performance requirements of the appropriate standards.</p> <p>Aftermarket seats and swivels should only be installed by competent and experienced personnel.</p> <p>Aftermarket seats and swivels in some state jurisdictions may require certification by a qualified certifying engineer. In all instances professional engineering advice should be sought to ensure the suitability of the integration of the seat or swivel into the original vehicle structure and to consider for any effect the modification may have on that vehicles compliance with legislated standards.</p> <p>As the manufacturer and seller of this product has no control over the end use or the fitment to the vehicle, the manufacturer and seller accepts no responsibility or liability for any malfunction of the product or the vehicle occupant safety systems as a direct or indirect result of faulty installation or unauthorized repair or modification to this product.</p> <p>Modification of the seat, swivel or installation kit should not be made without certification by a qualified engineer or manufacturers written consent.</p> <p>Where components of the installation kit are modified to better suit the specific nature of the installation, these must be substituted with components of equivalent or greater strength. Good engineering practice should be evident at all times including the use of metal spacers between brackets and the floor pan, appropriately torqued anchorage bolts, rust inhibitors on drilled holes and adhesive sealant used on underfloor backing plates.</p>		<p>THE INFORMATION CONTAINED IN THIS DRAWING IS THE SOLE PROPERTY OF TECHSAFE.</p> <p>ANY REPRODUCTION IN PART OR AS A WHOLE WITHOUT THE WRITTEN PERMISSION OF TECHSAFE IS PROHIBITED.</p>		VEHICLE/PROJECT TOYOTA HIACE H300 05/2019 ON (ALL MODELS)		
				DESIGN APPROVAL No. 20210022R001Rev0	COMPLIES WITH ADR 3 & 5	REV 0
				DATE 29/10/2021	DWG No. PK235	